

## BIOGAS INSTALLATION BIO-ENERGIE HERK - BELGIUM



### CONCRETE DIGESTER AND AFTER-DIGESTER

- CONTENT 3 x 2.945 M<sup>3</sup> GROSS
- HEATED AND INSULATED
- INTEGRATED GAS STORAGE
- BIOLOGICAL DESULFURIZATION
- PADDLE- AND PROPELLER MIXERS

### CONCRETE AFTER-STORAGE

- CONTENT 1 x 2.945 M<sup>3</sup> <
- GAS CAP <
- PROPELLER MIXER (TRACTOR CONNECTION) <

### SOLID FEEDING SYSTEM

- MIXING SOLID WITH MANURE
- CONTENT 80 M<sup>3</sup> WITH SCREW SYSTEM
- SIZE REDUCTION AFTER MIXING
- WEIGHING EQUIPMENT

### FEEDING OF LIQUIDS

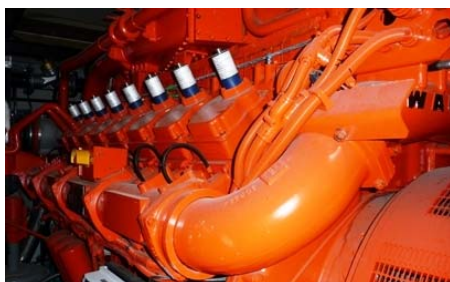
- 4 x 100 M<sup>3</sup> POLYESTER SILO'S <
- HEATING <
- CENTRAL AGITATOR <

### CHP

- 1 x 1.000 kWe WAUKESHA CHP
- CONTROL WITH TOUCH SCREEN
- AUTOMATIC SMS NOTIFICATION
- ELECTRICITY PROD.: 8 MILLION kWh/YR

### SANITATION TANK

- CONTENT 10 M<sup>3</sup> <
- CENTRAL PROPELLER MIXER <
- INSULATED, HEATED <
- 70°C, 1 HOUR (CONFORM 1774/2002) <



**HoSt B.V.**

Thermen 10  
7521 PS Enschede  
Nederland

+31 (0)53 – 460 90 80

[www.host.nl](http://www.host.nl)